

Nokia 7360 ISAM FX

Passive Optical LAN (ANSI)

The Nokia 7360 Intelligent Services Access Manager (ISAM) FX is a high capacity access node designed to meet the evolving needs of enterprise Passive Optical LAN (POL). It allows enterprises and other organizations to enjoy a premium experience of all their services today and smoothly evolve to the even higher capacity needs of tomorrow in a cost-effective way. The Nokia 7360 ISAM FX simultaneously supports a Gigabit Passive Optical Network (GPON) and next-generation PON technologies. It enables delivery of all services, including voice, data, video, Wi-Fi backhaul, security, surveillance and building automation through its market-leading capacity and non-blocking connectivity to each user port.

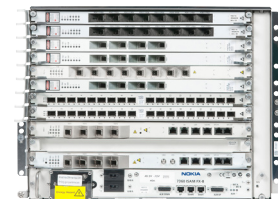
The Nokia 7360 ISAM FX is available in three size variants (small – FX-4, medium – FX-8 and large – FX-16) that are suitable for business offices, large enterprises, hospitals, universities, hospitality sector, sports arenas and others. It is a centralized access point for the entire LAN, capable of serving from hundreds to thousands of users and devices. The 7360 FX supports GPON technology and has sufficient switching, backplane and uplink capacity to evolve to next-generation fiber technology time wavelength division multiplexing (TWDM) in the future. The Nokia approach allows organizations to evolve their LAN in a gradual and cost-effective way, using the same access node and in-building cabling, while making minimal changes to electronics.

The market-leading capacity of Nokia 7360 ISAM FX enables organizations to:

- Meet the service demands with premium user experience
- Lower operational costs through savings in power, floor space and simpler management
- Get long-term value



7360 ISAM FX-16



7360 ISAM FX-8



7360 ISAM FX-4

Features

- Supports GPON technology in point to multipoint configuration
- Different shelf sizes, containing 4, 8 or 16 line cards
- Flexible density: a GPON card can have 8 or 16 ports
- Each port can connect up to 64 connection points
- All applications (voice, data, video, wireless backhaul, surveillance) converged on a single platform
- IP/Ethernet access platform
- Advanced traffic management
- Smooth evolution path to TWDM-PON using the same platform
- Managed by the Nokia 5571 Passive Optical LAN Command Center (PCC)

Note: Features content based on R5.1 baseline.

Benefits

- High capacity to meet increasing LAN demand
- No single point of congestion
- Dynamic bandwidth allocation (DBA) to allow peak bursts up to 1Gb/s per user/device
- Shelf-size options that support any building/campus size or deployment model in a central indoor or outdoor location
- Commonality of software, line cards and deployment practices across all ISAM FX shelf variants
- Green technology (power efficient)
- All services operate on a single network

Technical specifications

Full service platform

Multiservice access support

- 16-port GPON line card
- 8-port GPON line card

LT support

- GPON line cards
- EPON line card with DPoE
- 10G EPON line card with DPoE
- Point-to-point fiber line card
- VDSL2 with vectoring line cards
- System level vectoring (SLV) processor
- Voice services line card

Network termination (NT) support: FANT-F

- 480Gb/s switching matrix (bidirectional)
- Active/Active redundancy
- Four configurable 10Gb/s or 1Gb/s network links
- Small form-factor pluggable (SFP+) cages

Network termination input output (NTIO) support: FNIA-A

- Eight configurable 10Gb/s or 1Gb/s network links
- SFP+ cages
- Used as uplink, downlink or direct user link management
- Fully managed by the Nokia 5520 AMS and Nokia 5529 Access Provisioning Center (APC)

Standards compliance

Environmental

- ETS EN 300 019-1-1 storage – Class 1.1 weather-protected, partly temperature-controlled locations
- ETS EN 300 019-1-2 transport – Class 2.3 public transportation
- ETS EN 300 019-1-3 stationary use – Class 3.1E and Class 3.3 (assuming no condensation and icing)
- GR-63-CORE
- SBC TP76200MP
- GR-3108-CORE

Powering

- ETS EN 300 132-2

Protection

- ITU-T K.20 enhanced and K.45 basic

Safety

- IEC 60950, EN 60950 Class 1, AS/NZS 60950.1
- UL/CSA 60950-1-03
- EN 60950-1

EMC

- ETS EN 300 386 for telecommunications center installation environment
- ETS ES 201 468
- GR-1089-CORE
- FCC Part 15 Class A
- EN 55022

Acoustic noise

- ETS 300 753

Operating environment

- Temperature: -40°C to 65°C (-40°F to 149°F)
- Relative humidity: 5% to 93% (non-condensing)
- Over-temperature sensors and shutdown

Power

- Input
- 48/60V DC nominal
- Fully redundant power feeding (Branch A and B)

Physical dimensions

FX-16

- Height: 600mm (23.6in) (~14RU)
- Width: 500mm (19.7in); can be used in ETSI-sized 600mm x 300mm (23.6in x 11.8in) racks
- Depth: 280mm (11.0in)

FX-8

- Height: 360mm (14.1in) (8RU)
- Width: 445mm (17.5in); can be used in 482mm (19in) racks
- Depth: 280mm (11.0in)

FX-4

- Height: 223mm (8.8in) (5RU)
- Width: 445mm (17.5in); can be used in 482mm (19in) racks
- Depth: 280mm (11.0in)
- Rack-mounting pitch of 25mm (0.98in)

Construction (based on FX-16)

- 16 wire speed LT slots
- 256 GPON ports per shelf:
 - 16 ports x 16 slots
 - 8,192 subscriber locations (32 split)
- 10Tb/s total system capacity

Nokia is a registered trademark of Nokia Corporation. Other product and company names mentioned herein may be trademarks or trade names of their respective owners.

Nokia Oyj
Karaportti 3
FI-02610 Espoo
Finland
Tel. +358 (0) 10 44 88 000

Product code: PR1603018590EN (March)